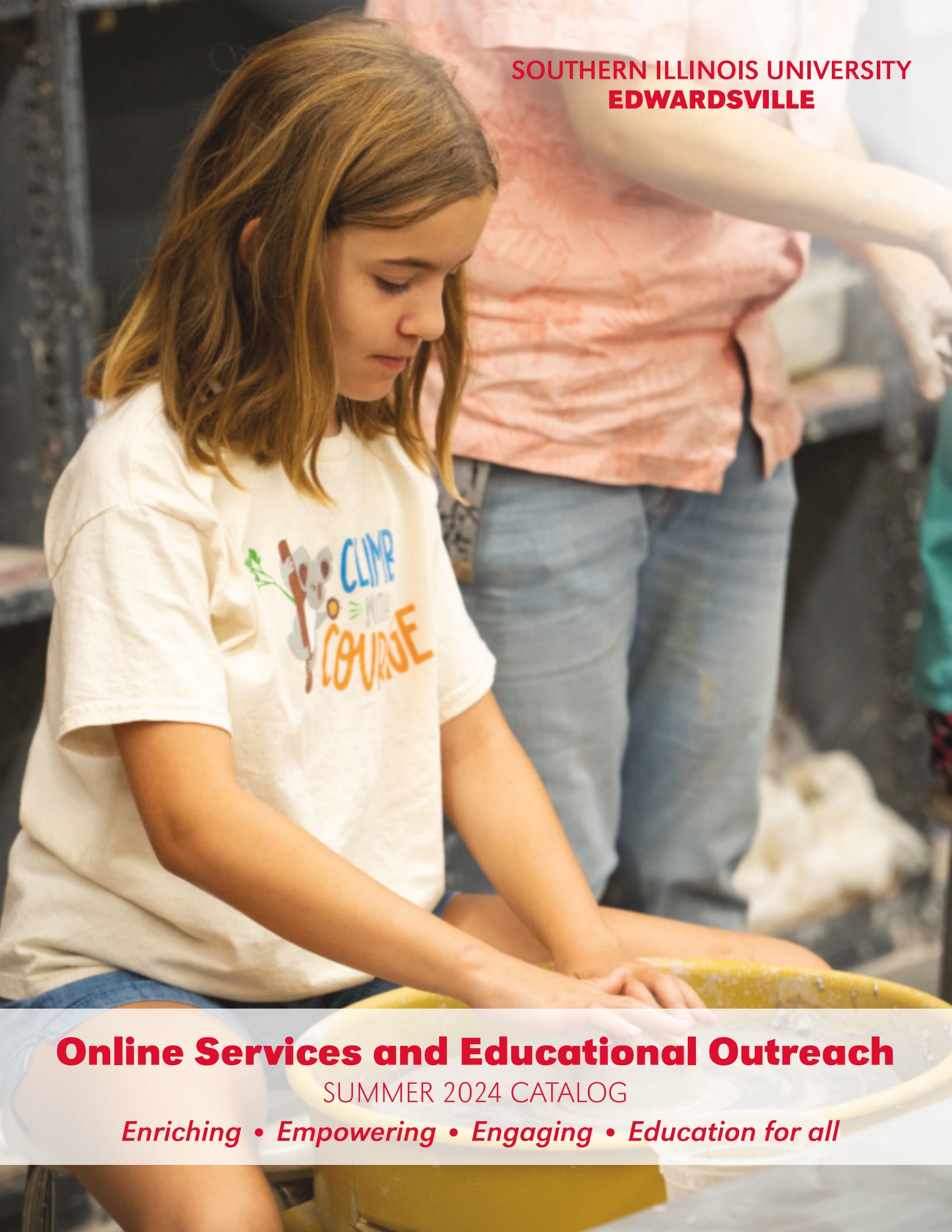


**SOUTHERN ILLINOIS UNIVERSITY
EDWARDSVILLE**



Online Services and Educational Outreach

SUMMER 2024 CATALOG

Enriching • Empowering • Engaging • Education for all



A MESSAGE FROM **THE DIRECTOR**

Welcome to our best summer catalog yet! We are thrilled to offer you new opportunities to pursue passions, refine talents, gain new skills, or brush up and leverage your current skills in new ways. You have come to the right place to find like-minded individuals who share a common vision and energy to be part of a learning community.

Ready to engage your mind? We have opportunities to learn conversational Spanish, American Sign Language, more about grant writing, QuickBooks and much more.

If you prefer more of a hands-on learning experience, you may want to try your hand at ceramics, learn to make mochi ice cream or try your hand at figure drawing. Summer is an ideal time to take a trip with us, too. This summer, we are touring the City Museum, Anheuser Busch and the Gateway Arch National Park.

I would be remiss if I did not welcome our new and returning summer campers back to campus. Everyone is looking forward to sharing campus with these energetic, curious, talented youths, and we know you will enjoy both the courses and the beauty of campus in summer. New this summer, the SIUE School of Nursing will host the IMAGINE Summer Success Academy and welcome up to 30 high school participants who intend to pursue a career in nursing.

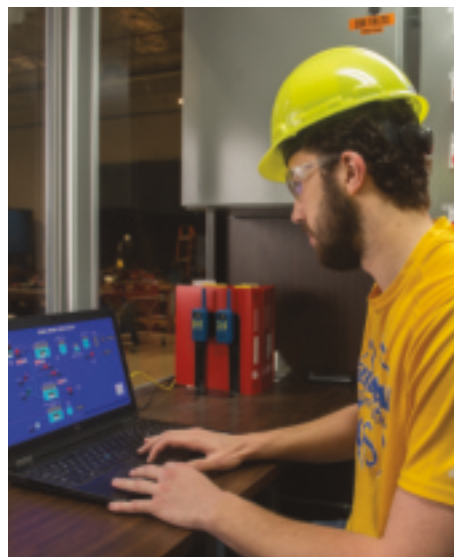
Wishing you a safe, enjoyable summer!

Mary Etting

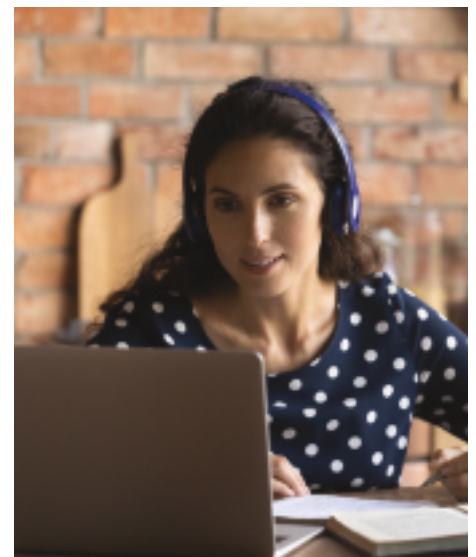
Director, Online Services and Educational Outreach



SUMMER CAMPS
PAGE 4



WATER TREATMENT TECHNOLOGY
PAGE 6



NEW! ITALIAN FOR THE TRAVELER
PAGE 9

Online Registration

HOW TO CREATE AN ACCOUNT AND REGISTER FOR ONLINE SERVICES AND EDUCATIONAL OUTREACH PROGRAMS

1. Create an account.

If this is your first time registering for a membership, trip or non-credit course online, you must create an account.

- Go to: enrole.com/siue
- Click on "Sign In/Create Acct" in the left navigation menu.
- Select "Create Account" and proceed to enter your information.
- Be sure to select "Yes" to receive emails and mailings from us with information about upcoming programs.
- Also, you will want to select "Individuals" before clicking "Submit" at the bottom of the page.

2. Add items to your cart.

After you have created an account or logged in, use the navigation on the left to select which category/courses/memberships/trips you want to add to your cart. Once you find the item you want to add, click "Add to Cart."

- If your course is hosted on the SIUE Edwardsville campus, there may be parking charges included. Select "Registration Fee - Without Parking," if you either would not like to pay for a parking pass or are associated with the University and have a University hang tag. Select "Registration Fee - Parking Included" if you would like to obtain a parking pass for the duration of the offering.
- From here you may either continue shopping or check out. If you are registering for a course that requires a promo code, you may enter it on this screen. Follow the prompts on the subsequent screens.

3. Completing your registration.

In your shopping cart, you should see your name under "Attendee List" and under the item(s) for which you are registering.

- If there is more than one member of your household attending, you may register both people for the event at the same time by clicking "Add Another Attendee" at the bottom of the page.
- You may also add additional programs and register for all the programs in which you are interested at once. Clicking "Submit Order," you will be redirected to the CashNet payment portal.
- Please enter your credit card information to complete your registration and click "Continue Checkout" at the bottom of the page.
- You will be redirected to a review page where you can review your order before finally submitting your order.
- Your order is not placed until you finalize your registration and are taken to a page with "Thank you. Your order has been placed." at the top of the page.

For any issues with registration or payment, please call 618-650-3213 to receive assistance.

2024 SUMMER CAMPS

Presented by SIUE Office of Online Services and Educational Outreach

**Please check website for final information.*

THEATER

(Grades K-12)

- **Cougar Theater Camp**
June 3-14
- **Musical Theater Camp**
July 22-26

STEM

(Grades 2-7)

- **Odyssey**
July 15-26



MUSIC

(Grades 6-12)

- **Percussion Institute**
June 3-6
- **Flute Camp**
June 10-13
- **Summer Band Camp**
June 25-28
- **String Development Camp**
July 8-12
- **Music Technology and Composition Camp**
July 15-18
- **Summer Jazz Camp**
July 15-18



DANCE

(Grades 6-12)

- **Dance Camp**
June 24-28
- **Junior and Senior Dance Intensive**
July 22-26

STEM

(Grades 9-12)

- **Engineering Camp**
June 3-7
June 10-14
- **IMAGINE Summer Success Academy**
June 11-14

VISUAL ARTS

(Grades K-8)

- **Art Camp 1**
June 3-7
- **Art Camp 2**
June 10-14
- **Art Camp 3**
June 24-28

siue.edu/summer



LEARNING ON THE GO

LIFELONG LEARNING EXPERIENCES

Missouri History Riverfront Takeover Cruise

Brush up on the history of the Mighty Mississippi while cruising the river! Amanda Clark, manager of Community Tours and the See STL tour program with the Missouri History Museum, will lead an engaging, conversational tour aboard select sailings. She will uncover the history of the bustling riverfront and the engineering marvel of the Eads Bridge while sharing hidden and unexpected stories with passengers along the way.

Thursday, June 13, 1:45-2:45 p.m.
50 S. Leonor K. Sullivan Blvd., St. Louis
Cost: \$30

Anheuser Busch Brewmaster Tour

If you are Budweiser's biggest fan, this is the tour for you. Get an all-access look at how the 'King of Beers' is brewed and visit exclusive locations on campus only available on this experience. Your adventure at the brewery includes visits to the Clydesdale paddock and stables, the Beechwood Aging Cellars, the Brewhouse, the historic Old Lyon Schoolhouse Museum and the Bevo packaging facility. The best part? You'll visit the Finishing Cellars to enjoy a sample of the freshest beer you will ever taste, poured directly from the finishing tank. Bring home a variety of souvenirs, including a hat and commemorative glass. This experience is a walking tour that consists of about two miles of inside/outside walking, lasts about two hours and is only available to guests ages 13 and over. Please note that closed-toe shoes are required for your safety (no Crocs or sandals).

Friday, June 28, 1:45-4 p.m.
1200 Lynch St., St. Louis
Cost: \$55

Behind the Scenes at the STL City Museum

Join us for a behind-the-scenes tour of one of St. Louis' most weirdly wonderful museums, the City Museum! The tour will start with a 30-45-minute private, guided walking tour geared toward the history and architecture of the City Museum. You will then be able to enjoy the museum and rooftop on your own for the rest of the day. No lunch will be provided, but you can leave for lunch and return to the museum, if you choose.

Friday, July 19, 10 a.m.-noon
750 North 16th St., St. Louis
Cost: \$35

Gateway to the City Tour

Join us for a ranger-led tour of the Gateway Arch Museum and tram ride to the top of the St. Louis Arch. We will embark on a 45-minute guided walk through the history of St. Louis and the Arch grounds by one of the U.S. National Park Rangers before enjoying a tram ride to the top of the Arch. You will then be able to explore the grounds, museum and gift shop on your own. To enjoy the tour, you will need to handle at least 96 stairs roundtrip and walk over uneven ground.

Wednesday, July 24, 9 a.m.-1 p.m.
200 S. Broadway, St. Louis (Preferred parking location)
Cost: \$20

EARN YOUR DEGREE AT SIUE! ONLINE BACHELOR'S DEGREE PROGRAMS

siue.edu/online-student-services/prospective-students

SIUE offers flexible, accelerated, fully online degree programs to fit the needs of adult learners like you. Our undergraduate online programs were developed to help you earn your degree online while you juggle life's responsibilities. You'll learn in a supportive, online environment that is focused on preparing you to accomplish your career goals without sacrificing personal, family and professional commitments. Whether you have 18 credit hours or an associate degree, a bachelor's degree is within your reach.

Online Bachelor's Degree Programs

- Applied Communication Studies, Public Relations
- Criminal Justice Studies
- Integrative Studies, Leadership in Organizations
- Psychology
- Online General Education Courses

Advance your career and improve your quality of life with a bachelor's degree. SIUE holds the same accreditations as many of the nation's most prestigious schools. Our online degree courses are held to the same high academic standards and are taught by the same highly qualified faculty who teach in SIUE classrooms. Through collaboration across campus, we offer condensed course terms and flexible entry points throughout the year.

We are here for you!

Contact the team in Online Student Services for more information.

online@siue.edu | 618-650-5832

CAREERS IN WATER TREATMENT TECHNOLOGY SIUE ENVIRONMENTAL RESOURCES TRAINING CENTER



Water Quality Control Operations Program

Program Cost: \$9,900 | siue.edu/ertc

PROGRAM

The SIUE Environmental Resources Training Center (ERTC) Water Quality Control Operations Program is a one-year, full-time program of study leading to a certificate of completion. Classes meet Tuesday-Friday for nine months starting in mid-August each year. During the summer, students complete a 10-week internship program where they work five weeks at a drinking water treatment plant and five weeks at a wastewater treatment plant. Upon completion of the full-year program, students are qualified to enter the water and wastewater industry as water operators, wastewater operators, distribution/collection workers, laboratory technicians or maintenance workers all for less than \$10,000.

FACILITIES

The ERTC facility provides students with two fully equipped wet chemistry teaching labs, classrooms, auditorium, library/computer center, 30,000 gallon/day training-scale drinking water and wastewater treatment plant, and the 0.5 million gallon/day SIUE University wastewater treatment plant.

CERTIFICATIONS

Students are eligible to take Illinois and Missouri certification exams to become certified as drinking water and wastewater operators-in-training. Upon completion of the ERTC program, graduates are eligible for full certification.

Contact the Environmental Resources Training Center for more information.

ertcinfo@siue.edu | 618-650-2030



PERSONAL DEVELOPMENT



siue.edu/personal-development

LANGUAGES

Everyday Japanese Elementary 1: Let's Speak in Japanese

This course is designed for beginners who wish to develop basic Japanese language skills. No need to know the Japanese characters. Textbooks will need to be ordered for the course and information for ordering will be provided before the course's start date.

Course Fee: \$99*

Mondays, 6-7:30 p.m., June 3-July 1
SIUE Edwardsville Campus



Beginning Spanish

Do you want to learn the Spanish language? Beginning Spanish is the perfect place to start as you will be introduced to the language even if you have little to no knowledge of it!

Course Fee: \$59*

Thursdays, 6-7:30 p.m., June 6-27
SIUE Edwardsville Campus

NEW!

Spanish Grammar in Depth – Intermediate Level

Grasp some of the most challenging topics in Spanish. All grammar topics will be studied in the present tense. Once you understand the grammar rules, you can apply them to the other tenses. Other topics that will be covered include direct and indirect objects, pronouns, reflexive verbs, stem-changing verbs, and the uses of “ser” and “estar.”

Course Fee: \$109

Mondays, 6-8 p.m., June 3-July 22
Online via Zoom

NEW!

Spanish Fluency – Advanced Level

Have you studied Spanish but need to improve your fluency? These sessions are designed for you! You will practice conversation using all the tenses of the indicative and imperative modes.

Course Fee: \$109

Thursday, 6-8 p.m., June 6-Aug. 8
(No class on June 27 and July 4)
Online via Zoom

NEW!

Spanish for Healthcare Professionals III

This is the third part of a three-course series. Attendance to previous Spanish for Health Professionals classes will be helpful, and/or some previous knowledge of basic Spanish is needed to succeed. You will learn basic verbs and a variety of vocabulary to be able to create personally tailored material to use it immediately.

Course Fee: \$119*

Mondays, 6-8 p.m., June 3-July 1
SIUE Edwardsville Campus



Introduction to American Sign Language and Deaf Culture

You will focus on mastering the basics of fingerspelling, numbers, colors, facial grammar and sentence structure. You will also learn conversational and cultural behaviors necessary to hold a beginning-level conversation in ASL with deaf or hearing-impaired users of the language. Introductory information about deaf culture and deaf humor will also be presented to provide you with a broad picture of the language and culture.

*Course Fee: \$109**
Wednesdays, 6:30-8:30 p.m., June 12-July 31
SIUE Edwardsville Campus

“

This course was very informative because it has helped me understand the deaf community and has helped me understand my three-year-old grandson who is deaf. It has allowed me to understand him and communicate better with him. The instructor was awesome, and the material was presented in a fun way to learn.

– KARLA C.

”

Introduction to American Sign Language and Deaf Culture II

Further your American Sign Language knowledge in a continuation of our introduction course. In this course, you will develop basic receptive and expressive skills, including fingerspelling, vocabulary, grammar, syntax and classifiers. In addition, you will continue to be introduced to aspects of American deaf culture.

*Course Fee: \$109**
Thursdays, 6:30-8:30 p.m., June 13-Aug. 8 (No class on July 4)
SIUE Edwardsville Campus



RETURNING!

Italian for the Traveler

Enjoy this jump-start course for smart travelers. Learn survival phrases and how to read signs, menus, transportation schedules and more. Explore cultural differences and be prepared to enjoy your adventure.

Course Fee: \$59
Mondays and Wednesdays, 6:30-8 p.m., July 22-31
Holy Trinity Catholic Church, Fairview Heights

**Parking is included. Participants who will not utilize SIUE parking will pay a reduced rate at checkout.*

HEALTH AND WELLNESS

Rise and Shine Yoga

Experience the benefits of early morning yoga as you stretch and strengthen your body, awaken and refresh your mind, and nourish your spirit. Our practice will focus on the synchronization of movement and breath. You will build endurance, strength, flexibility and mental focus; and leave feeling energized, refreshed and ready for anything the day has in store. Options to make this class more accessible while keeping it challenging will be given. This class may use optional weights. Instructor: Louise M. Hamlin-Laird, E-RYT 200, E-RYT 500, YACEP

*Course Fee: \$80 for 10-week session;
Drop-ins welcome at \$15 per session
Saturdays, 8-9 a.m., June 1-Aug. 10
(No class on June 29)*

Offered both in-person at Immanuel Methodist Church, Edwardsville and online via Zoom

Yoga and Breath Work

Breathing, like movement, is so fundamental to human experience that we rarely even think about our breath. However, mindful movements and breath work, or intentional practices of breathing and moving, can deeply increase our quality of life. This class unites the art of mindful movement and breath work with practices in diverse breath work techniques and movements inspired by gentle yoga, Tai Chi, qi gong and more. Instructor: Louise M. Hamlin-Laird, E-RYT 200, E-RYT 500, YACEP

*Course Fee: \$80 for 10-week session;
Drop-ins welcome at \$15 per session
Thursdays, 11:30 a.m.-12:30 p.m., June 13-Sept. 5
(No class on June 27, July 4 or Aug. 22)
Online via Zoom*

Yoga for Beginners/Intermediate

This class is for the experienced beginner who is ready for a gentle challenge. Class will begin with a gentle warm-up, transitioning into a flow that syncs our movement with our breath, and ending with a restorative pose to relax and stretch. Instructor: Louise M. Hamlin-Laird, E-RYT 200, E-RYT 500, YACEP

*Course Fee: \$80 for 10-week session;
Drop-ins welcome at \$15
Two sessions available:*

- *Wednesdays, 10-11 a.m., June 5-Aug. 7
Check website for final location.*
- *Thursdays, 6-7 p.m., June 13-Sept. 5
(No class on June 27, July 4 or Aug. 22)*

Offered both in-person at Immanuel Methodist Church, Edwardsville and online via Zoom



Sit to Stand – Chair Yoga

Chair yoga is a gentle form of yoga in which poses are performed while seated and with the aid of a chair. This yoga is suitable for all levels of abilities, standing is optional. It is an excellent class for beginners, seniors, individuals with recent injuries, balance or coordination issues, limited mobility and disabilities, and those who have difficulty or do not want to get up and down on the floor. Chair yoga helps reduce stress while increasing flexibility, range of motion, circulation and strength, balance and coordination, and lung capacity. This class incorporates breathing exercises, simple visual meditation techniques, gentle stretching, easy yoga postures and a final relaxation.

*Course Fee: \$80 for all 10 sessions;
Drop-ins welcome at \$15 per session
Thursdays, 9-10 a.m., June 13-Sept. 5
(No class on June 27, July 4 or Aug. 22)
Immanuel Methodist Church, Edwardsville*

Restorative Yoga

Restorative yoga is a powerfully gentle practice with exceptional benefits, such as the reduction of blood pressure and reduced risk of stroke or heart attack. Additionally, restorative yoga can help reset the body and relax the mind. The skills learned in this class have many other potential mental and physical benefits. A regular restorative yoga practice should be considered critical self-care for those employed in high-stress industries. You will learn the art of deep relaxation through breath work, restorative yoga poses and the use of props to ensure optimal comfort. With simple instruction and guided breath work, this class is accessible to all levels of experience. Instructor: Louise M. Hamlin-Laird, E-RYT 200, E-RYT 500, YACEP

*Course Fee: \$80 for 10-week session;
Drop-ins welcome at \$15 per session
Fridays, 6-7:15 p.m., June 7-Aug. 16
(No class on June 28)
Offered both in-person at Immanuel Methodist Church, Edwardsville and online via Zoom*

CREATIVE ARTS



Beginning Drawing

Do you think drawing is a gift that must come naturally? Drawing is a skill that can be developed with practice. You will learn how to draw with proper techniques and discover how to represent what you see through studies in contour drawing, perspective, positive/negative space and value.

Cost: \$69
Mondays, 5-6:30 p.m., June 3-July 8
Online via Zoom

“

Great course, regardless of your skill level. I took it just after the beginning class and learned so much. Those who were more experienced improved as well because of the personalized instruction.

– LINDA R.

”

Intermediate Drawing

For those with some drawing experience, you will refine and expand your drawing and observation skills.

Cost: \$69
Tuesdays, 5-6:30 p.m. June 4-July 9
Online via Zoom

NEW! Foundations in Portraiture Drawing

You will work to study the basics of drawing pencil portraits. Visual aids and reference materials will be used to enhance your understanding of line, shape, form, shadow and anatomy.

Cost: \$69
Thursdays, 6:30-8:30 p.m., July 11-Aug. 15
Online via Zoom

NEW! Life Drawing Open Studio

Beginner to intermediate students will have the opportunity to work with an instructor to learn the foundational skills of interpreting and drawing from a model. If you have some level of experience, you may take advantage of this time to work with a live model at your own pace.

Cost: \$79*
Tuesdays, 6:30-8:30 p.m., July 9-Aug. 13
SIUE Edwardsville Campus

NEW! Tiny Organic Shelves

Join Brandace Cloud and learn how to use several hand-building techniques to create small, organic shaped shelves. These shelves are perfect for the tiny flower your kiddo gave you, or that rock that was super cool at the creek.

Course Fee: \$50
Saturday, 2-5 p.m., July 13
Macoupin Art Collective, Staunton



NEW! Painting Studio: 20th Century Modern Art

Each week, a different 20th Century Modern artist will be studied. You will attempt to emulate their style and techniques to understand how these individuals changed the way we view art.

Cost: \$79*
Wednesdays, 6:30-8:30 p.m., July 10-Aug. 14
SIUE Edwardsville Campus

CREATIVE ARTS (CONT.)



Discover Digital Photography

Gain an overview of digital photography if you are not familiar with the technology. You will learn the basic functions of your camera and controls to create high-quality images on your smartphone, DSLR, compact or mirrorless image-making devices. If you want to take better images, you will learn the basic practices of digital photography such as understanding exposure and composition, learning how to properly store images, editing photographs with different kinds of software, and preparing images for printing. In addition to technical skills, you also practice developing the creativity and artistic eye that allow you to express yourself through visual imagery.

*Course Fee: \$99**

Wednesdays, 5-7:30 p.m., June 5-26

SIUE Edwardsville Campus

RETURNING!

Watercolor Painting – Beginning and Intermediate

Whether you are a beginner or have some experience with watercolor and want to learn more, this course will assist you in learning important techniques in this painting medium. Throughout this course, your instructor will lead you through a variety of projects, as well as assist you in the creation of works from your interests. From landscape to botanical, you will learn how to depict through watercolor!

*Cost: \$109**

Tuesdays, 3-5 p.m., July 2-Aug. 6

SIUE Edwardsville Campus

Painting Landscapes

The visual arts course will focus on bringing landscapes to life through painting. You will be encouraged to use acrylics and watercolors to create landscapes. We will facilitate explanations of fundamental painting elements as you work, as well as give some examples of different styles used in history to paint the great outdoors. As you move through this course, we will also facilitate projects of interest to you and give you helpful feedback to improve your painting skills.

*Cost: \$109**

Tuesdays, 5:30-7:30 p.m., July 2-Aug. 6

SIUE Edwardsville Campus



NEW!

Introduction to Oil Painting

If you have always wanted to learn to paint in oil or hone your oil painting skills, this is the course for you. In this course, you will walk through techniques used by some of your favorite master artists, as well as new fun ways of working in oil. The goal of this class is to learn how to safely work in this medium, experiment with colors and techniques, and complete two works in oil. Whether you are completely new to or experienced with oil painting, come join this fun class and create some art!

*Cost: \$109**

Thursdays, 5:30-7:30 p.m., July 11-Aug. 15

SIUE Edwardsville Campus



NEW! Pride-Stained Glass

Join us and learn the basics of Tiffany-style-stained glass. You will learn how to cut glass, use a stained-glass grinder and use copper foil tape to wrap each piece. Then, you will learn how to use the soldering iron to combine all the pieces together. At the end of the second class, you will walk away with a Progress Pride Flag approximately 8" x 4."

Course Fee: \$125
Saturdays, 11 a.m.-2 p.m., June 1 and 8
Macoupin Art Collective, Staunton

NEW! Cicada Flower-Stained Glass

In this class, you will also learn how to layer glass and insert flowers into your piece. You can bring your own special flowers, but they must be thin! We will also supply a limited amount of local pressed flowers. You will learn to use the soldering iron to combine all the pieces. At the end of the second class, you will walk away with an intricate cicada-stained glass approximately 8" x 4".

Course Fee: \$125
Saturdays, 11 a.m.-2 p.m., July 20 and 27
Macoupin Art Collective, Staunton

NEW! Moth/Butterfly-Stained Glass

In this class, you will learn how to layer glass so that we may insert flowers into our piece. You can bring your own special flowers, but they must be thin! We will also supply a limited amount of local pressed flowers. You will learn to use the soldering iron to combine all the pieces. At the end of the second class, you will walk away with an intricate moth or butterfly-stained glass, approximately 8" x 4".

Course Fee: \$125
Saturdays, 3-6 p.m., July 20 and 27
Macoupin Art Collective, Staunton

CULINARY ARTS

NEW! Cooking Mochi Ice Cream at Home

Join us as we make delicious mochi ice cream! There's nothing like home-cooked, soft, silky mochi. We will be making Strawberry Daifuku (mochi stuffed with strawberry or other fruit). Link to purchase necessary ingredients and cooking tools will be sent one week prior to class. Japanese language is not required, however, some Japanese terms will be introduced. Most dietary restrictions can be accommodated if noted prior to the event.

Course Fee: \$39
Friday, 7-9 p.m., Aug. 16
Online via Zoom

Japanese Tea Tasting

Let's enjoy a tea tasting party! We will make matcha, green tea and five other herbal teas from Japan such as loquat, barley and even seaweed teas. Japanese traditional sweets will be also served. You will learn the differences between green and matcha tea and try them throughout the evening. We will make matcha with a traditional Japanese bamboo whisk. Japanese language is not required, however, some Japanese terms will be introduced. Most dietary restrictions can be accommodated if noted prior to the event.

Course Fee: \$109
Wednesday, 6-8 p.m., Aug. 14
SIUE Edwardsville Campus

CERAMICS



NEW! Ceramics Soda Firing Workshop

This exhilarating and unpredictable technique involves the introduction of soda ash into the kiln near the end of the firing, resulting in rich and varied surface effects not possible with traditional ceramic glazes. You will create ceramic artwork with slips and glazes specifically designed for soda firing, and participate in the soda firing process. At the end of the course, you will take home a variety of glazed (note that raku surfaces are decorative only), completed ceramic artwork.

Course Fee: \$169

Saturdays and Sundays, 1-4 p.m., June 1 and 9

Ceramics Studio, SIUE Edwardsville Campus

NEW! Ceramic Raku Firing Workshop

This exciting technique is when still glowing-hot ceramic artwork is taken out of the kiln and immediately placed into combustible materials such as sawdust, newspaper, horsehair, grasses and leaves, resulting in unique and unusual surface effects. You will create ceramic artwork specifically designed for raku firing and participate in this quick and spontaneous firing process. At the end of the course, you will take home a variety of glazed (note that raku surfaces are decorative only), completed ceramic artwork.

Course Fee: \$169

Saturdays, 10 a.m.-4 p.m., Aug. 3 and 10

Ceramics Studio, SIUE Edwardsville Campus

Ceramics Open Studio

Designed for advanced skill levels only, you will engage in a self-directed studio practice in ceramics with guidance and critical feedback from Alex Thomure. Building upon the essential technical skills of ceramics, you are encouraged to develop a unique voice as an artist working in ceramics. Alex will help you establish creative goals and provide personalized prompts for research and growth.

*Course Fee: \$239**

Thursdays, 6-9 p.m., June 6-Aug. 1 (No class on July 4)

Ceramics Studio, SIUE Edwardsville Campus

NEW! Ceramics for Grades K-5

In this one-week, half-day ceramics camp, your camper will be introduced to age-appropriate, essential ceramics skills to make various projects such as pinch and coil pots, small figurines, decorative tiles and more. Your camper will finish work with a variety of colorful glazed surfaces.

Course Fee: \$199

Two sessions available:

Grades K-2: Monday-Friday, 9 a.m.-noon, July 15-19

Grades 3-5: Monday-Friday, 1-4 p.m., July 15-19

Ceramics Studio, SIUE Edwardsville Campus

NEW! Ceramics for Grades 6-12

In this one-week, half-day ceramics camp, your camper will have the chance to gain age-appropriate, sophisticated ceramics skills to make various projects such as wheel-thrown mugs and bowls, slab-built boxes, clay masks and more. Your camper will finish work with a variety of colorful glazed surfaces.

Course Fee: \$199

Two sessions available:

Grades 6-8: Monday-Friday, 9 a.m.-noon, July 22-26

Grades 9-12: Monday-Friday, 1-4 p.m., July 22-26

Ceramics Studio, SIUE Edwardsville Campus

Ceramic Wheel Throwing

In this ceramic art studio course, you will be introduced to essential ceramic wheel throwing techniques, including centering, throwing, altering, trimming and functional attachments. Designed for all skill levels, you can pursue various functional pottery forms such as cups, bowls, plates, jars, teapots and pitchers. You will engage in additional aspects of the ceramic process such as glazing, kiln-loading/unloading, firing and cold finishes. Visual presentations of historical and contemporary ceramic artwork will add context and inspiration toward ongoing projects and techniques demonstrated in class. At the course's end, you will take home a variety of glazed, completed ceramic artworks.

Course Fee: \$229

Saturdays, 10 a.m.-1 p.m., June 1-July 27 (No class on July 6)

Ceramics Studio, SIUE Edwardsville Campus

PERSONAL ENRICHMENT



Creative Writing

Do you have a story you'd like to tell, but you're not sure where to start? Join us in exploring the many ways you can make that story a reality. We'll look at fiction, creative non-fiction and non-fiction narrative, looking closely at the parts of a story and how to develop them most effectively. Whether this is your first time writing or you're an old pro, we'll all have a chance to hone our craft—and have a lot of fun along the way.

Course Fee: \$59
Tuesdays, 6-8 p.m., July 16-Aug. 6
Belleville Public Library

The World of James Bond

Ever wondered why James Bond is the most recognized fictional character in history? This fun, five-week course will attempt to answer that and many other Bond-related questions. Whether Bond 'shakes' or 'stirs' you, this accessible course will explore the history behind Bond, discuss the overt and covert messages and meanings found in the movies, and provide a deeper sense of Bond's 60-plus year influence on culture. You don't need to be a fan to enjoy the course.

Course Fee: \$69
Tuesdays, 6-8:30 p.m., May 28-June 25
Online via Zoom

NEW! Subconscious Writing

Do you have a writing project that just never gets off the ground or peters out on you because you do not know what to write next? Or maybe you feel that your writing can sometimes feel flat and uninspired? In this course, we'll be discussing subconscious writing, and tools and strategies to help you write more creatively. So just relax and let your subconscious take over, and we'll explore creativity just below the surface of your mind.

Course Fee: \$69
Tuesdays, 6-8 p.m., June 4-July 9
Belleville Public Library

Memoir Writing

Writing can be a great way to develop self-understanding, while at the same time, creatively working through challenges and celebrating life. Explore the many ways to express your thoughts and emotions through reflective writing that will give you new perspectives on living. We'll also investigate the many ways we can tap into our subconscious to gain even more insight into ourselves.

*Course Fee: \$79**
Thursdays, 6-8 p.m., June 6-July 18 (No class on July 4)
SIUE Edwardsville Campus

NEW! How to Start Your Novel

You have a great idea for a novel, but you don't know what to do next? If this sounds like you, there are lots of ways you can get started, and more importantly, get to the finish line. You will investigate the foundational concepts of writing a novel and how to get words on the page that can inspire you to continue to the end while enjoying the journey.

*Course Fee: \$79**
Wednesdays, 6-8 p.m., July 3-Aug. 7
SIUE Edwardsville Campus



Next Level: Intermediate Golf

Want to take your love of golf to the next level? Join us as we enjoy learning an introduction to advanced fundamentals to increase your golf game. Topics covered will include full swing with your driver, fairways and irons with an emphasis on pre-shot routine and consistency throughout the entire bag.

Course Fee: \$139
Thursdays, 5-6:30 p.m., Aug. 1-29
Sunset Hills Country Club, Edwardsville

TEST PREPARATION

Whether you are just starting college or looking to pursue an advanced degree, we have a test preparation course for you. These courses are offered in a variety of formats, from one-day to weekly, and are offered in a fully online format to better fit into your busy life! Choose from one of the sessions below to get started! All courses are hosted online via Adobe Connect, free to download!

ACT/SAT Strategy Workshop

Join us for an informative combined introduction to the ACT and SAT. This session will introduce you to both tests and highlight some of the key similarities and differences between them.

Course Fee: FREE!

Two sessions available:

Wednesday, 8-9 p.m.

- June 26
- Aug. 28

ACT Live - Online Prep Course

Let us help you prepare for this important test! ACT Blitz classes include 16 hours of instruction. Classes are scheduled to allow time to practice new skills between sessions.

Course Fee: \$399

Four sessions available:

Monday-Thursday, 8 a.m.-noon, June 3-6

Tuesday and Thursday, 2-4 p.m., June 4-June 27

Monday-Thursday, 12-4 p.m., July 15-18

Tuesday and Thursday, 6-8 p.m., Aug. 1-27

SAT Live - Online Prep Course

Let us help you prepare for this important test! SAT Blitz classes include 16 hours of instruction. Classes are scheduled to allow time to practice new skills between sessions.

Course Fee: \$399

Four sessions available:

Tuesdays, 12-2 p.m., June 4-July 23

Monday-Thursday, 12-4 p.m., June 24-27

Monday-Thursday, 2-4 p.m., July 15-25

Monday-Thursday, 9-11 a.m., July 29-Aug. 8

GRE Strategy Workshop

Join us for an informative introduction to the GRE General Test. Come meet with our experienced instructor to learn about the test and pick up a few tricks.

Course Fee: FREE!

Two sessions available:

Wednesday, 8-9 p.m.

- June 26
- July 24

GRE Live - Online Prep Course

Let us help you take the first step to an advanced degree! Sharpen your skills on actual GRE test questions and follow our proven study plan to start on your path to success.

Course Fee: \$799

Four sessions available:

Tuesday and Thursday, 6-9 p.m., June 4-27

Sunday, 2-5 p.m., July 7-Aug. 25

Monday and Wednesday, 7-10 p.m., July 10-Aug. 5

Tuesday and Thursday, 6-9 p.m., Aug. 6-29

LSAT Strategy Workshop

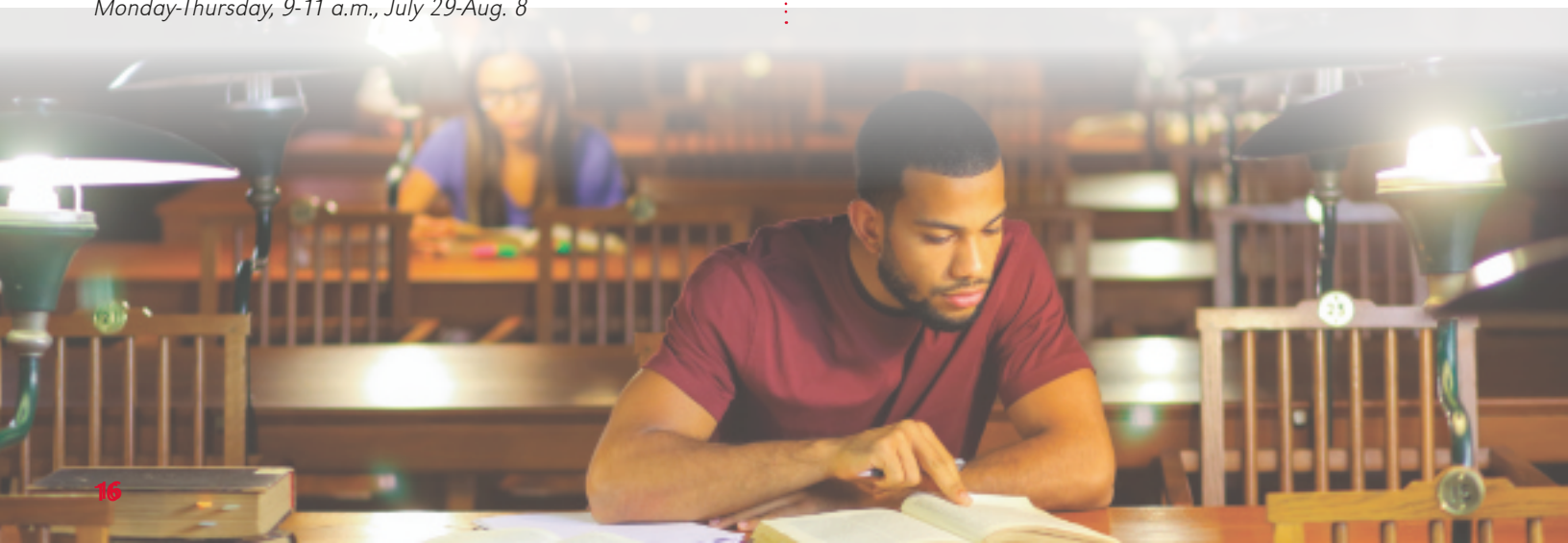
If you are preparing for law school, you know that success on the LSAT exam will play a critical role in your acceptance into the program of your choice.

Course Fee: FREE!

Two sessions available:

Wednesday, 8-9 p.m.

- June 5
- Aug. 7



PROFESSIONAL DEVELOPMENT



siue.edu/professional

PROFESSIONAL DEVELOPMENT

Introduction to Quickbooks® Online

Learn basic accounting principles and how they are applied in the online version of QuickBooks. We will introduce the software, set up business accounts, record transactions, produce reports and learn how QuickBooks Online can be customized to fit your business needs.

Course Fee: \$79; Digital Badge Fee: \$49 (additional to the course fee)
Tuesdays and Thursdays, 6-7:30 p.m., Aug. 6-Sept. 3
Online via Zoom



RETURNING! GRANT WRITING

Grant writing can be a daunting task. Join us as we learn how to navigate through grant writing with our presenters who have spent multiple years in grant administration and successfully obtained a variety of local, state and federal grants. Attend as many sessions as you would like or attend them all for a discounted rate of \$149!

Grant Writing for Novices

Obtain an overview of the four types of grants and the common elements found in grant proposals. Funding sources for each type will be reviewed and various elements of proposals will be reviewed in detail.

Course Fee: \$49*
Monday, 5:30-7:30 p.m., July 29
SIUE Edwardsville Campus

Grant Funding for Novices

Obtain an overview of funding opportunities for the four types of grant opportunities. You will have an opportunity to explore various sites and identify potential funding sources in your area of interest.

Course Fee: \$49*
Wednesday, 5:30-7:30 p.m., July 31
SIUE Edwardsville Campus

Grant Funding Opportunity Interpretation for Novices

Explore critical portions in funding opportunity announcements. You are welcome to bring specific questions related to funding opportunities you wish to pursue.

Course Fee: \$49*
Monday, 5:30-7:30 p.m., Aug. 5
SIUE Edwardsville Campus

Grant Budget Preparation for Novices

Obtain an overview of the budget development process and have an opportunity to develop a mock budget from a case study that will be provided. You are welcome to bring specific questions related to the budgets of the funding opportunities you wish to pursue.

Course Fee: \$49*
Wednesday, 5:30-7:30 p.m., Aug. 7
SIUE Edwardsville Campus

“

The instructors were genuine, knowledgeable and extremely helpful. Access for help outside of class was encouraged and available. It was a very worthwhile investment of time!

– CARLOS B.

”

POST-BACCALAUREATE CERTIFICATES



SIUE offers seven post-baccalaureate certificates (PBCs) that range from three to five courses. These certificates are designed for working professionals who want to advance their career by learning additional skills in credit-bearing courses.



Data Science*

Ideal for mathematicians and statisticians

Digital Media Literacy*

Ideal for educators, librarians and media professionals

Emerging Technologies*

Ideal for P-12 school personnel

Instructional Technology*

Ideal for organizational training personnel

Online Teaching and Learning*

Ideal for educators, corporate training personnel and college instructors

Professional Leadership Strategies*

Ideal for future leaders in public and nonprofit sectors

Taxation

Ideal for individuals interested in public accounting, tax positions and other tax-related careers

** fully online option available*

For more information, contact online@siue.edu or visit siue.edu/online.

INDUSTRY-ALIGNED CREDENTIALS THAT CAN LEAD DIRECTLY TO JOBS

Digital badges leading to industry-aligned credentials are earned through a combination of online, self-paced modules, complemented by in-person and augmented reality hands-on learning to train and assess key employment competencies. Financial support for course tuition and fees may be available for eligible participants under the Workforce Innovation Opportunity Act.



Constellation for Interpersonal Communication

The Introduction to Interpersonal Communication alternative digital credential offers a credential that is vital for a variety of careers. Earners of this credential have demonstrated knowledge and familiarity with the principles and practices of oral communication. The curriculum provides training in message formation and delivery, listening, perception, awareness of verbal and nonverbal codes, and managing conflict. Competency is assessed via quizzes. This digital credential offers a pathway to three credit hours upon acceptance and enrollment at SIUE.

Course Fee: \$149
Rolling enrollment
Online



Laboratory Technician

Laboratory technicians, also known as biological technicians, set up, operate and maintain laboratory instruments and equipment; monitor experiments; collect data and samples; make observations; and calculate and record results. Rated as a Bright Outlook Occupation by the U.S. Department of Labor, laboratory technicians are frequently employed in chemical, pharmaceutical, environmental, waste management and material manufacturing industries. Delivered in a hybrid format with online courses and in-person laboratory sessions, the curriculum covers key employment skills, including science fundamentals, laboratory safety, general laboratory techniques and good manufacturing practices.

Course Fee: \$4,000

Rolling enrollment

Hybrid (Online and SIUE Edwardsville Campus)



Chemical Technician

Chemical technicians support the research and development of new products and processes and work in a wide variety of industries, including food and beverage, biofuels, chemical, pharmaceutical, environmental, waste management, and material manufacturing. Delivered in a hybrid format with online courses and in-person laboratory sessions, the chemical technician curriculum covers key employment skills, including chemistry fundamentals, laboratory safety, general laboratory techniques, analytical chemistry techniques, chemistry lab manual, inventory/waste management, biochemistry/biotechnology, microbiology and intermediate analytical techniques.

Course Fee: \$1,000

Pre-requisite: Laboratory Technician

Rolling enrollment

Hybrid (Online and SIUE Edwardsville Campus)

Alternative Digital Credentials at SIUE

Certain professional development and educational offerings at SIUE may offer learners the opportunity to earn a corresponding alternative digital credential to demonstrate their competency in or mastery of a given topic. SIUE's alternative digital credentials can be shared via social media, LinkedIn, personal websites and other electronic formats. Alternative digital credentials enhance an individual's employment competitiveness by highlighting and defining their abilities relative to in-demand skills in their field or related skills that contribute to an employee's overall ability to thrive and adapt in a changing workplace. Only learners who successfully demonstrate the required competencies as defined in the course rubric will earn the alternative digital credential.

Custom Training Options for Regional Employers

SIUE's alternative digital credential offerings can be customized to meet your business's specific training requirements, including options for the development of new courses and modules. Financial support for training costs may be available. **To learn more about how our faculty and staff can help your organization train, retain and upskill your workforce, please contact Maggie Ervin (magervi@siue.edu) for more information.**

ONLINE CERTIFICATE OPPORTUNITIES

Boost your productivity and skill set with these convenient and engaging online non-credit courses from Learning Resources Network's UGotClass® program. Participate any time on any computer to learn from expert instructors. Register for the certificate option of any course grouping and attend all courses in the group for a discounted rate. Certificate administered by UGotClass®. Registration and course deadlines same as individual courses.

Remote Working and Communicating

Working remotely does not make you an expert on remote work. Gain new insights, experiences and advanced tips for working from home. Find out the five bad habits too many remote workers and their managers acquire from lack of experience, tools and expertise. Then acquire the latest strategies for communicating with remote workers. Come away with a deeper understanding of this enormous cultural and work shift going on in the workplace and in society.

Course Fee: \$245

Available Online Only: June 3-28

Managing Remote Workers

You cannot manage remote workers like you manage office workers. But you can manage remote workers better, with greater productivity and efficiency. Discover the keys to successful managing in the new workplace of the 21st century. Get a step-by-step practical guide you won't get anywhere else. Employees and employers both like the new system. You'll want to apply these practices to your office workers as well.

Course Fee: \$245

Available Online Only: July 1-26

Remote Worker Manager Practicum

Your third month will be spent mastering what you need to know and documenting your achievement. The practicum includes weekly one-on-one communication with your instructor, preparation for the Remote Work Manager exam, and a 750-1,000 word paper on how you will work to implement and improve your management of remote work.

Course Fee: \$245

Available Online Only: Aug. 5-30

MANAGING REMOTE WORKERS CERTIFICATE

Register for the certificate option and receive both managing remote workers courses for a discounted rate. Certificate administered by UGotClass®.

Certificate Fee: \$395

Video Marketing

Sight, sound and motion are much more compelling than static words on a page. Video is very hypnotic and it quickly speeds up the "know, like and trust" factor with your audience. You will discover how to use simple online video to quickly bond with your viewer, drive traffic to your website, boost business and build brand awareness. Find out how to shoot simple, effective videos without costly fancy equipment or savvy technical skills. Discover the secrets to creating content that commands attention. Learn how to dominate Google and YouTube with your video and to strategically use YouTube to market your business 24/7 — even while you sleep.

Course Fee: \$245

Available Online Only: June 3-28

YouTube for Business

Learn how to get your YouTube video on the first page of Google Search. Just like Facebook, YouTube is a social network that needs to be set up, optimized and used regularly to be effective. Your patterns of behavior on YouTube may be working against you. Learn how YouTube can complement your current marketing and social media strategy and how to maximize your YouTube Channel to get the greatest return.

Course Fee: \$245

Available Online Only: July 1-26

MASTERING VIDEO MARKETING CERTIFICATE

Register for the certificate option and receive both video marketing courses for a discounted rate. Certificate administered by UGotClass®.

Certificate Fee: \$395





Podcasting

Businesses are turning to podcasting to grow their brand and connect with customers. People with a niche hobby are turning podcasts into a business. Learn how to take your business or hobby and turn it into a podcast. This step-by-step class will take you from start to finish and cover the required elements needed to get your show online. Come to class with your idea and end with your show online for all to hear.

Course/Certificate Fee: \$245
Available Online Only: June 3-28

PODCASTING CERTIFICATE

Certificate administered by UGotClass® upon completion of Podcasting course.

Introduction to Game Design

Games are increasingly recognized as a tool that can serve many business purposes beyond entertainment. This course provides a general introduction to what goes into the design and development of both video and analog games, with a particular focus on the use of games outside of consumer entertainment.

Course Fee: \$245
Available Online Only: June 3-28

Intermediate Video Game Design

Mobile games are the fastest-growing segment of the market as more and more people play casual games. In this intermediate course, you will learn the basics of video game design process, learn about the main video game genres, and use a game development application to begin your journey of making games.

Course Fee: \$245
Available Online Only: July 1-26

Keys to Customer Service

Learning to build your customer service skills will have a powerful impact on your career success, as well as success in other areas of life. Through this course, you will discover the direct relationship between service skills and career achievement.

Course Fee: \$145
Available Online Only: June 3-28

Extraordinary Customer Service

Transform your customer service into something extraordinary. As a result, more repeat business will improve your bottom line. Extraordinary customer service comes from focusing on the essential elements that yield big results.

Course Fee: \$145
Available Online Only: July 1-26

CUSTOMER SERVICE CERTIFICATE

Register for the certificate option and receive a discounted rate for both Customer Service courses. Certificate administered by UGotClass®.

Certificate Fee: \$245



BASIC GAME DESIGN CERTIFICATE

Register for the certificate option and receive both of the Game Design courses for a discounted rate. Certificate administered by UGotClass®.

Certificate Fee: \$395

ONLINE CERTIFICATE OPPORTUNITIES (CONT.)



Adobe Illustrator Essentials

Adobe Illustrator is the industry standard computer illustration software. Use Illustrator to draw shapes and design logos, flyers, posters, banners, business cards, or any other vector graphics for print or web. In this course, you will learn Adobe Illustrator fundamentals to set up a print document and use various tools to draw, type and color all kinds of shapes and illustrations. Learn how to efficiently manage layers and artboards, and create print-ready PDF documents. Access to Adobe Illustrator software required.

Course Fee: \$225

Available Online Only: June 3-28

Adobe InDesign Essentials

Adobe InDesign is the industry standard page-layout program that works with Adobe Illustrator and Photoshop seamlessly. InDesign allows you to create simple to complex multi-page documents such as brochures, flyers, books and magazines. This course is a comprehensive exploration of InDesign tools and capabilities to create professional documents. You will learn how to manage the InDesign environment and create, setup, design, enhance and finalize multi-page documents. Access to Adobe InDesign software required.

Course Fee: \$225

Available Online Only: Aug. 5-30

Adobe Photoshop Essentials

This fundamental course covers Adobe Photoshop CC most commonly used tools, menus and panels. You'll learn all the basics of Photoshop to effectively work with selection and editing tools, layers and masks to edit, retouch and enhance existing images or create your own composite digital art work. Impress your business organization, friends and family by enhancing their photos and create magazine cover quality enhanced images. Access to Adobe Photoshop software required.

Course Fee: \$225

Available Online Only: July 1-26

GRAPHIC DESIGN SOFTWARE ESSENTIALS CERTIFICATE

Register for the certificate option and receive all of the graphic design essentials courses for a discounted rate. Certificate administered by UGotClass®.

Certificate Fee: \$545



Beginning Conversational Spanish

Designed for beginners, this course will have you speaking and reading Spanish in no time. You will practice the basic building blocks of the language and common idiomatic expressions. You will know enough vocabulary and grammar for simple conversations, and you will learn how to ask and answer questions. Whether you speak some Spanish and need a refresher, or no Spanish, you will complete the course with the skills to communicate in Spanish.

Course/Certificate Fee: \$290

Available Online Only: June 3-July 26

BEGINNING CONVERSATIONAL SPANISH CERTIFICATE

Certificate administered by UGotClass® upon completion of Beginning Conversational Spanish course.

Introduction to Power BI

Gain insights into your data! Power BI (business intelligence) is a widely-used business analytics service offered by Microsoft. Power BI Desktop is a complete data analysis and report creation tool that you install for free. In this course, you will discover how to quickly extract, transform and load data with just a few clicks. You will create interactive visualizations (charts, maps, KPIs) to provide you with insights into your company's data to make informed decisions.

Course Fee: \$195

Available Online Only: June 3-28

Intermediate Power BI

Delve further into Power Query to ETL (Extract, Transform and Load) your data. Build the Data Model using modeling features and relationships. Perform calculations using Data Analysis Expressions (DAX) functions. Utilize Time Intelligence functions to view YoY or YTD reports. Add user-friendly features to enhance your reports.

Course Fee: \$195

Available Online Only: July 1-26



Advanced Power BI

Expand your knowledge of Power BI Desktop to the highest level. This course focuses on the advanced capabilities of Power Query, Data Modeling and Reports. Check for data inconsistencies, design efficient queries, create proper relationships, and write DAX code to ensure reports update quickly and accurately. Add navigation and analytical features to your reports to enable consumers to analyze the results.

Course Fee: \$195

Available Online Only: Aug. 5-30

POWER BI CERTIFICATE

Register for the certificate option and receive a discounted rate for all three Power BI courses. Certificate administered by UGotClass®.

Course Fee: \$495

ONLINE CERTIFICATE OPPORTUNITIES (CONT.)

Understanding Debits and Credits

In this course, you will learn about the accounting equation and the five categories involved in every business: assets, liabilities, owner's equity, revenue and expenses. Every financial transaction falls into one or more of these categories. Learn how to create a chart of accounts that meet the needs of your business. You will learn how double entry bookkeeping works and the process of recording debits and credits. This course will show you how to identify, analyze and record transactions using journal entries under the cash basis accounting method.

Course Fee: \$195
Available Online Only: June 3-28

General Ledger and Month End Procedures

In this course, you will learn how to post journal entries to the correct general ledger accounts impacted by each transaction. This course will show you how to make sure your general ledger balances at the end of each month by preparing an unadjusted trial balance. You will learn how to look for errors when you don't balance and how to determine to correct entries. After posting correcting entries and/or adjusting entries, you will verify debits and credits equal with an adjusted trial balance. This course also goes through the steps of performing monthly bank reconciliations.

Course Fee: \$195
Available Online Only: July 1-26

Closing Procedures and Financial Statements

This course shows you how to create a worksheet used to adjust account balances and prepare financial statements. Use your financial statements to measure performance, make improvements and set goals. The final step covered in this course is closing your books and preparing them for the next accounting period; this is done by journalizing and posting closing entries.

Course Fee: \$195
Available Online Only: Aug. 5-30

BOOKKEEPING CERTIFICATE

Register for the certificate option and receive a discounted rate for all three Bookkeeping courses. Certificate administered by UGotClass®.

Course Fee: \$495

Introduction to Six Sigma Green Belt

This challenging introduction to Six Sigma Green Belt course teaches critical skills required for Six Sigma practitioners. This first course in the certificate program explains the basic terms and proven Six Sigma problem-solving methods, team building tools, and descriptive statistics that are the basis for the statistical tools contributing to improvement of projects and the overall success of your organization.

Course Fee: \$195
Available Online Only: June 3-28

Intermediate Six Sigma Green Belt

Organizations depend on the measurement and analysis of performance to make key decisions that affect the organization. This course builds on the ideas and skills learned in the introduction to Six Sigma Green Belt course that organizations, specifically their Six Sigma teams, use to improve. You will learn process analysis, data collection and analysis, probability and valid statistical conclusions, and hypothesis testing.

Course Fee: \$195
Available Online Only: July 1-26

Advanced Six Sigma Green Belt

This final course teaches participants to improve and control processes. Topics included in this course include hypothesis-testing, design of experiments and statistical process control. The instructor will share many handouts, spreadsheets and web links that have tools participants will use while completing Six Sigma projects.

Course Fee: \$195
Available Online Only: Aug. 5-30

SIX SIGMA GREEN BELT CERTIFICATE

Register for the certificate option and receive all three of the Six Sigma courses for a discounted rate. Certificate administered by UGotClass®.

Certificate Fee: \$495





Introduction to SQL

Learn how to write SQL code to create and populate database tables and how to write simple SQL queries that are capable of retrieving vast amounts of information from a database. You will discover the power of the relational database, learn how to create and manage database tables, and use SQL SELECT statements to pinpoint and retrieve data from a database.

Course Fee: \$245

Available Online Only: June 3-28

Intermediate SQL

Discover how to write powerful SQL queries that enable you to retrieve data from one table or from multiple tables stored in the database simultaneously. You will learn how to merge data from multiple columns, create calculated fields, and order and group the results from a query. You will also learn how to create a single join query or subquery to obtain data from multiple tables simultaneously.

Course Fee: \$595

Available Online Only: July 1-26

Advanced SQL

Take your SQL query skills to a new level. In this course, you will learn how to write advanced subqueries, advanced join queries and UNION queries that query more than one table. Learn how to use transaction processing to ensure SQL statements execute completely or not at all and how to create stored procedures to store SQL statements for execution.

Course Fee: \$595

Available Online Only: Aug. 5-30

SQL CERTIFICATE

Register for the certificate option and receive all three of the SQL courses for a discounted rate. Certificate administered by UGotClass®.

Certificate Fee: \$595

CONTINUING EDUCATION FOR LICENSED PROFESSIONALS

siue.edu/professional



SIUE is an approved CEU provider by the State of Illinois for Social Work continuing education. If you are licensed/certified in any other state or province, please refer to the regulations in that state/province or the national board requirements to determine whether this will qualify for CEU credits.

SIUE Summer Orff Institute: AOSA Teacher Education Course, Levels 1 and 2

Join the AOSA-approved Level 1 Teacher Training Course at SIUE hosted by the SIUE Department of Music. The approved program is a comprehensive curriculum taught by experienced, enthusiastic and rigorous Orff specialists. Largely experiential, Orff Level 1 is a time in which the class as an ensemble comes together to explore, develop skills, and create and analyze music and movement activities. While primarily for K-8 music teachers, the objectives, scaffolding and work are appropriate for secondary classrooms. Level 2 is a time for expanded learning after using and developing elemental musical and movement materials following Level 1.

Conference Fee: \$720

Monday-Tuesday, June 17-18; Thursday-Saturday, June 20-22

and Monday-Friday, June 26-30

8:30 a.m.-4:15 p.m.

Dunham Hall, SIUE Edwardsville Campus

Computer-Aided Design Courses

Courses are offered on a continuous basis in 10-week cycles online via Zoom. Please check the website for the most up-to-date information. All courses are three credits and cost is \$3,311 per course unless otherwise stated. Must complete introduction course to participate in the intermediate course.

CATIA V5 Intro:
Introduction to Solid and Assembly Modeling
Course Fee: \$3,311

CATIA V5 Intermediate:
Advanced Design and Assembly Management
Course Fee: \$4,425

NX11 Intro:
Introduction to Solid and Assembly Modeling
Course Fee: \$3,311

NX11 Intermediate:
Advanced Design and Assembly Management
Course Fee: \$3,311



RENTAL FACILITIES

By holding events in facilities on the SIUE campus, you gain the support and resources of the campus and our people. With a variety of space options, you can host professional seminars, workshops, team-building exercises, walks and events with confidence, knowing that SIUE will exceed your expectations.

SIUE's state-of-the-art facilities are attractive and available for rent. Both individuals and companies can take advantage of the great spaces and equipment we have to offer: classrooms, special event spaces, conference rooms, The Gardens at SIUE, Madison County Bike Trails, the NCERC at SIUE and the East St. Louis Center.

Contact us today!

618-650-3210

siue.edu/rental-facilities

THE  GARDENS AT SIUE

ONLINE SERVICES AND EDUCATIONAL OUTREACH POLICIES

Cancellation/Refund Policy

All cancellation/refund requests must be made in writing and emailed to outreach@siue.edu. Cancellation/refund requests must be received at least five business days prior to the first day of any conference, course or event, unless otherwise specified. A refund, minus a \$15 administrative fee, will be processed as long as the above terms are met. If you have questions regarding this policy, please contact us at 618-650-3210 or outreach@siue.edu.

Parking on Campus

For courses on weekdays on the SIUE main campus, parking is included in the cost of the course. A reduced price is available at checkout for participants who do not need parking or prefer to pay for parking on their own. Parking passes will be emailed to paid registered participants; please provide a valid license plate number to avoid paying additional parking fines. The printed pass must be displayed on the dashboard of the registered vehicle and is valid only during the times of the course (30-minute grace period is extended for travel to and from the meeting location).

Accommodations

The Office of Online Services and Educational Outreach is committed to providing universally accessible services and opportunities throughout our programming. If you need assistance or an accommodation, please contact our office: 618-650-3210, outreach@siue.edu or by mail (Online Services and Educational Outreach, Box 1084, Edwardsville, IL 62026) upon registration and/or at least three days prior to the offering to allow us time to accommodate your needs.

OFF-CAMPUS AND CORPORATE PARTNERSHIPS

siue.edu/corporate

Corporate Affiliates Pilot Program

SIUE is rolling out a new pilot program for corporations, non-profits and government entities that offer tuition reimbursement to employees. Through a simple contract between the employer and SIUE, employees receive a waived application fee, a tuition discount and concierge service such as registration help, a dedicated contact for questions that may arise, and assistance navigating a return to the classroom for busy working adults. If your company offers tuition reimbursement and you're not already receiving this benefit, contact our office today to discuss this exciting new opportunity because openings are limited!

Traditional Corporate Partnerships

SIUE partners with organizations to offer educational and training opportunities for their employees. Through a unique contractual agreement, credit and non-credit opportunities are available to your staff so they can earn advanced credentials without ever receiving a bill from SIUE. Partnership students benefit from curriculum specifically designed for the working professional. If you do not see your employer on this list, we will be pleased to work with your human resources department to add your organization to our growing list of partners who recognize the value of investing in their employees' professional development.



For more information, please contact:

Lacey Wieseman
Assistant Director of Off-Campus and Corporate Partnerships
lwiesem@siue.edu
618-650-3985

EDUCARD

Do you want the opportunity to explore possibilities of professional growth or personal enrichment in an economical and flexible way?

If you answered "Yes," we invite you to sit in on regular classes at SIUE through our Educard Program. Educard is a special community program that allows you to attend selected credit classes offered by SIUE. It provides an opportunity for you to sample the subjects that interest you most. Anyone who is not currently enrolled for credit in the University is eligible for Educard. High School students are eligible and may take up to three classes.

Which classes are approved for Educard participation?

For a full list of classes, please visit banner.siu.edu/ssb and click Class Schedule. Select the Summer 2024 term and search any subject you would like. Classes not offered through Educard are classes with a full enrollment, non-credit classes, travel study, distance education, classes in which a danger may exist, classes requiring prerequisites, and classes where added direct expense may be incurred by the University.

What is not included?

- You will not receive a grade as an Educard participant.
- No official records of your classwork or attendance will be kept; therefore, no transcript is available.
- Since you do not pay normal student welfare and activity fees, you may not participate in student services and activities supported by those fees.

What about textbooks?

Educard participant may borrow textbooks, as available, at no cost through Textbook Service. You may pick up your textbooks after the first week of classes, and you are required to return textbooks to Textbook Service at the end of the term.

What is the fee?

\$60 per class

Register for Educard

- Online: siue.edu/educard
- In person: Rendleman Hall, Room 1330, Monday-Friday, 8 a.m.-4:30 p.m.
- Please do not mail payment

WORKFORCE INNOVATION OPPORTUNITY ACT PROGRAM

Unemployed? Underemployed?

SIUE serves students through the Workforce Innovation and Opportunity Act (WIOA) Program

SIUE works regularly with county and state employment and training agencies to help match eligible students with funding. Individuals who are unemployed, underemployed or experiencing financial hardship may be eligible for support to complete their educational programs. Students must be seeking a credential in a high-demand employment field, be within two years or less of completing their degree, and meet local workforce criteria to qualify.

If you are seeking employment in an in-demand field and are interested in learning more about funding opportunities that will help you complete an SIUE program, please contact us at outreach@siue.edu or reach out directly to your county provider:

- Madison County Employment and Training Department (Bond, Jersey, Madison and Calhoun Counties), 618-296-4301
- St. Clair County Intergovernmental Grants Department Workforce Development Group (St. Clair, Monroe, Randolph, Clinton and Washington Counties), 618-825-3259
- siue.edu/financial-aid/wioa

**SOUTHERN ILLINOIS UNIVERSITY
EDWARDSVILLE**

Office of Online Services and Educational Outreach
Rendleman Hall
P.O. Box 1084
Edwardsville, IL

NON-PROFIT
ORGANIZATION
US POSTAGE
PAID
PERMIT 4678
ST LOUIS MO

Payments are accepted in the following ways:



Online:

siue.edu/educational-outreach

See page 4 for detailed registration instructions.



In Person: Visit us weekdays 8 a.m.-4:30 p.m. in Rendleman Hall, Room 1330



Phone: Call 618-650-3210 and pay using a credit card



Mail: Send this completed registration form and payment to:

SIUE Office of Online Services and Educational Outreach
Box 1084 | Edwardsville, IL 62026

REGISTRATION FORM

Date: _____

Name _____
Last First Middle

Email _____ Phone _____

Address _____
Street City State ZIP

License Plate Number *if parking pass is needed* _____

Non-credit Course: Educard: Lifelong Learning:

Course Title: _____ Fee: _____

Course Title: _____ Fee: _____

Course Title: _____ Fee: _____

Course Title: _____ Fee: _____

Methods of Payment: Cash Check Credit Card    

Credit Card _____
Number Expiration Date CVC Signature

Other Information

I would like to teach a course on _____

I would be interested in taking a course on _____

I would like to be added to the email list (Please provide email) _____

I would like to make a donation to the Office of Online Services and Educational Outreach
(Please fill in method of payment above and return to the above address. Thank you for your generosity!)